



proforest

with LiSeed Consulting

RSPO Shared Responsibility

Sustainable Palm Oil Dialogue - Europe

June 14th, 2019

Consultants/Technical Facilitators

Aimee Russillo, LiSeed Consulting

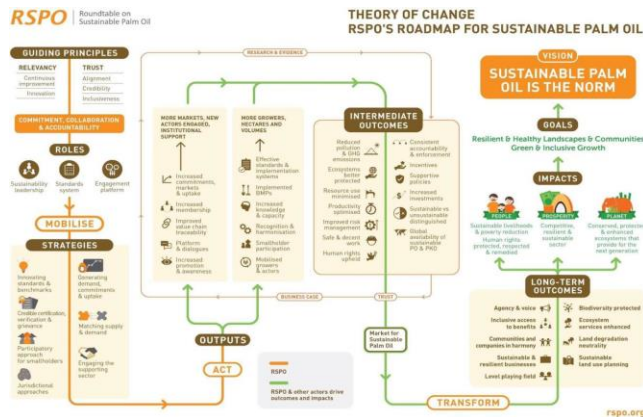
Bilge Daldeniz, Proforest

RSPO Liaison/Project Coordinator

**Oi Soo Chin, Impacts and Evaluation
Director**

RSPO Theory of Change and Revised P&Cs

2017 → 2018



Theory of Change (ToC) = Roadmap to achieve the vision

- Mobilize, Act and Transform
- Shared Responsibility and Accountability for results

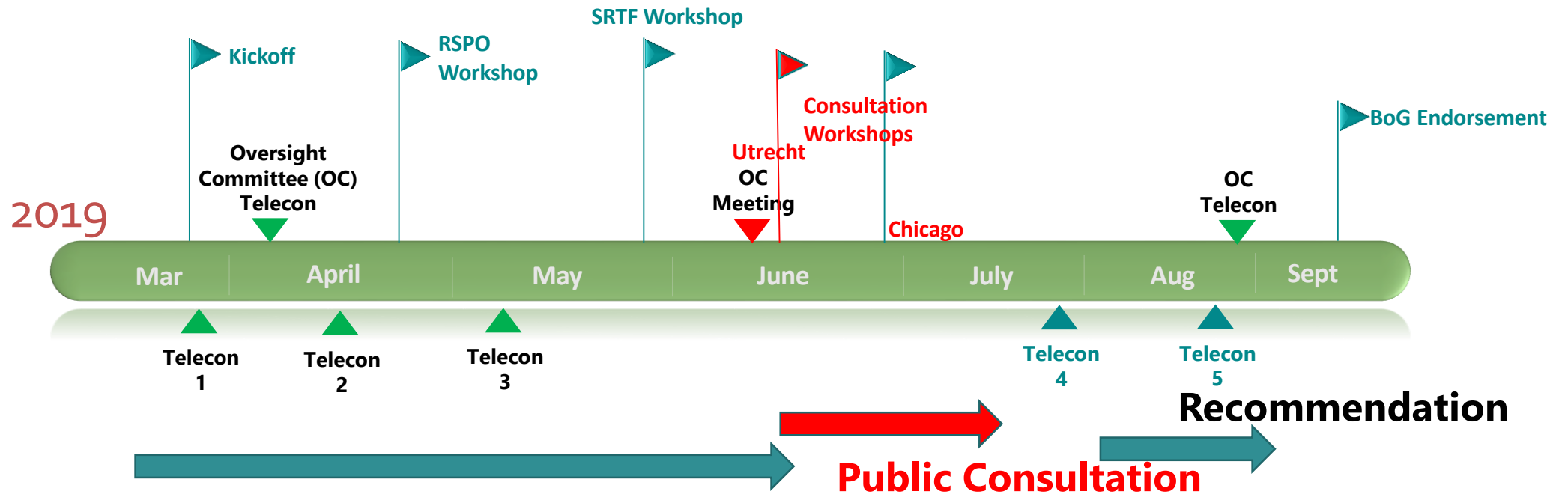


Revised Principles and Criteria ToR

- Make it more relevant and practical, e.g. by including metrics (making it measurable)
- Incorporating elements of impacts as per the 'Theory of Change (ToC)
- Streamlined language

Where we are....

proforest
with LiSeed Consulting



Shared Responsibility Task Force

- Defining the indicators - WHAT
- Recommendations on implementation system - HOW

Building the public consultation framework



P&C restructure subgroup outputs



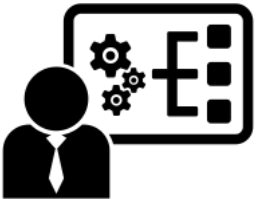
Excel worksheet with criteria & membership roles



Interviews with Secretariat staff on systems



Review organizational documents e.g. Guidance TBP



SR Task Force – inputs/homework:

definition, review of own member category, interviews

Shared Responsibility to make Sustainable Palm Oil the Norm

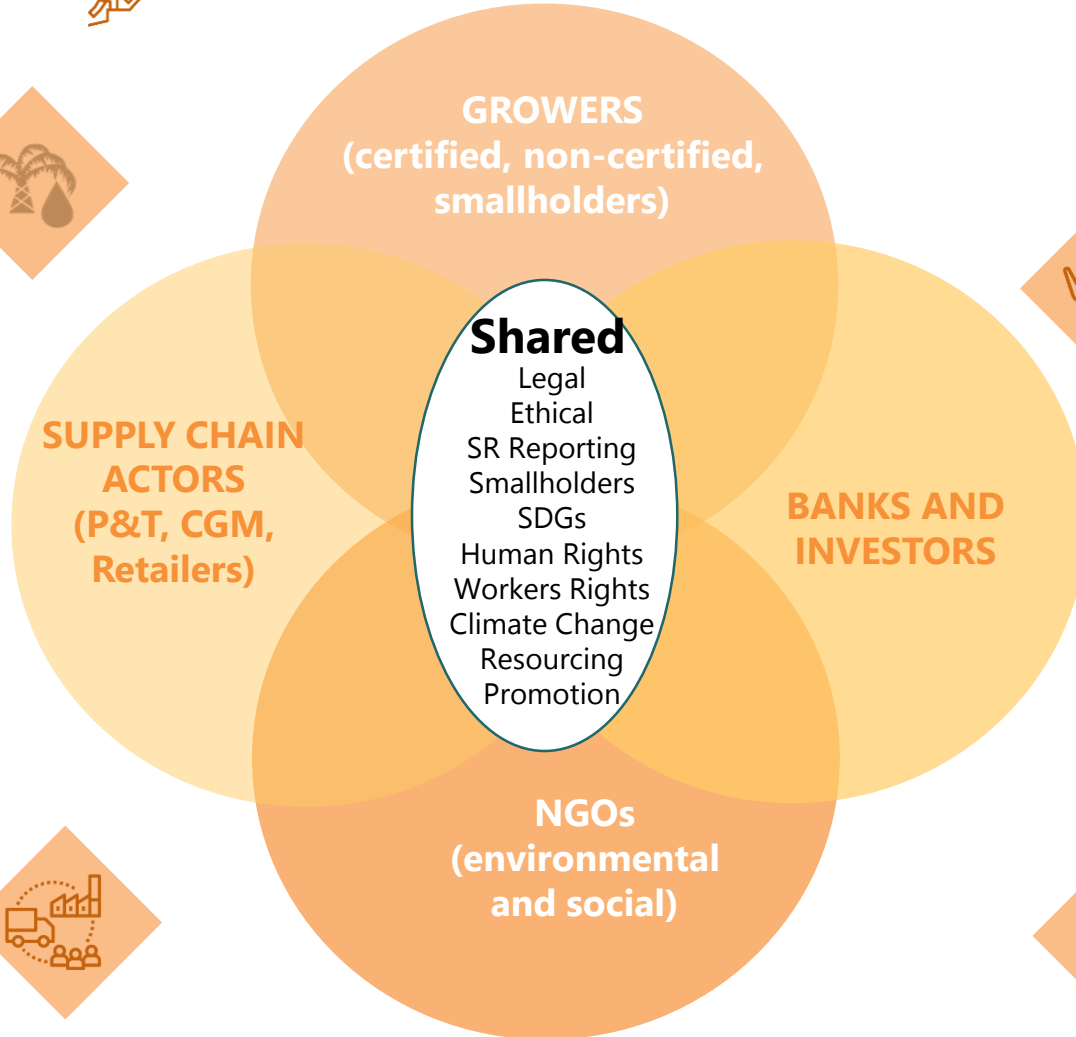


RSPO Secretariat and Board provide overarching leadership

- GROWERS**
- CONTINUE RSPO certification and seek 100% certified
 - SUPPORT schemed smallholders to be 100% certified
 - DIRECT efforts towards independent smallholders to seek transparency, traceability and eventual certification



- Banks and Investors**
- PROVIDE incentives and tools for good behaviors
 - PROMOTE Sustainable Palm Oil policies
 - ENGAGE with regulators and governments



- Supply Chain Actors**
- UPTAKE
 - 100% CSPO by 2023
 - PROMOTION
 - INVESTMENT
 - POLICIES



- NGOs (social and environmental)**
- ANALYSIS and RESEARCH
 - ADVISE on effective support & training
 - MONITOR implementation
 - PROMOTE consumer awareness
 - SUPPORT smallholder inclusion
 - ENGAGE governments
 - WORK on Jurisdictions
 - WORK with directly impacted communities



Resources

RSPO Taskforce webpage for more information and background

<https://rspo.org/about/supporting-bodies#shared-responsibility-task-force>

Public Consultation Survey

https://www.surveymonkey.com/r/RSPO_SRTF_Recommendations_Public_Consultation